

# MONTHLY MEMBERSHIP PROGRESS REPORT

LOCATION INDIA

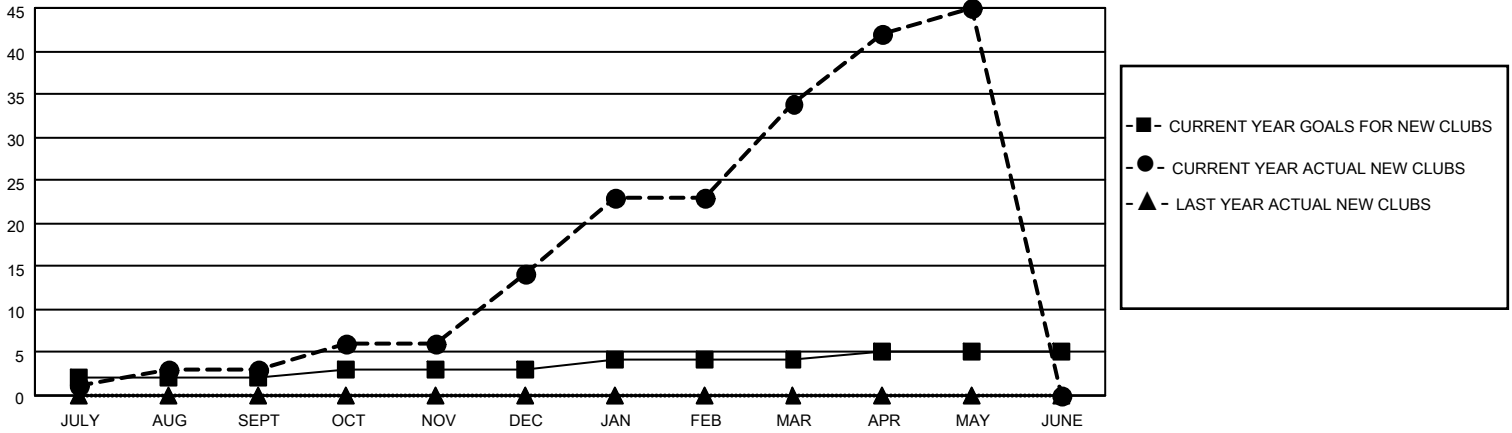
District 3232F1

Results as of: 5/31/2021

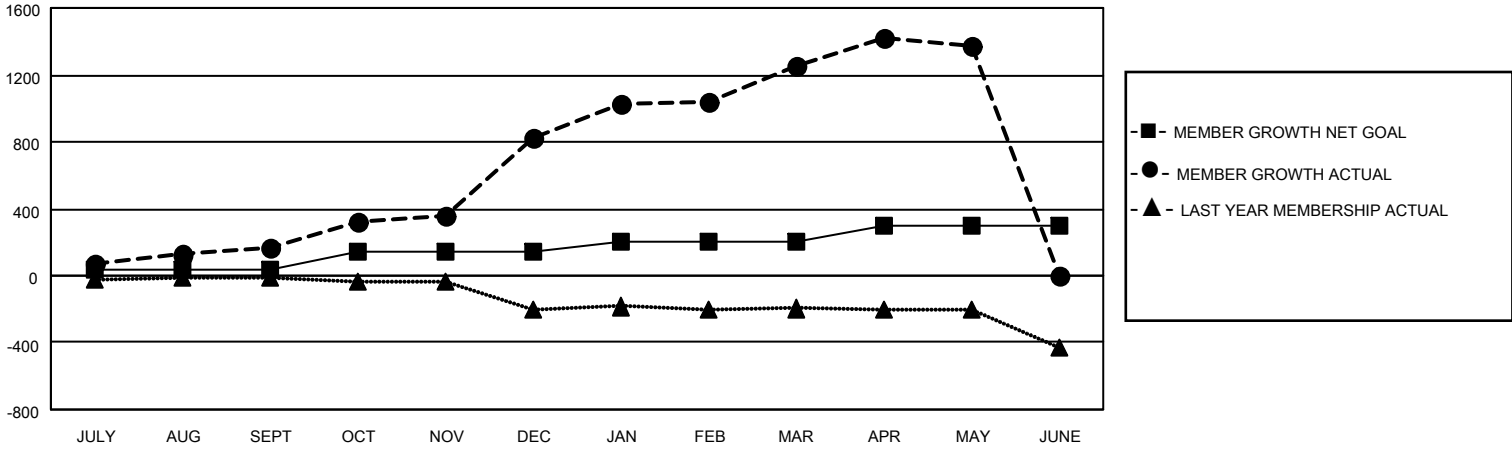
Clubs			
RESULTS FOR 2020-2021			
QUARTER	NEW CLUB GOAL	NEW CLUBS	DROPPED CLUBS
JULY/AUG/SEPT	2	3	1
OCT/NOV/DEC	1	11	0
JAN/FEB/MAR	1	20	0
APR/MAY/JUNE	1	11	0

Members			
RESULTS FOR 2020-2021			
QUARTER	MEMBER GROWTH NET GOAL	MEMBER GROWTH ACTUAL	DROPPED MEMBERS ACTUAL (including transfers)
JULY/AUG/SEPT	40	189	17
OCT/NOV/DEC	100	743	70
JAN/FEB/MAR	60	465	31
APR/MAY/JUNE	100	299	181

**GOALS AND ACTUAL NEW CLUBS CUMULATIVE**



**GOALS AND ACTUAL MEMBERS CUMULATIVE**



DROPPED CLUBS: 1	100 CLUBS OF 119 ADDED 1 OR MORE NEW MEMBERS	<p style="text-align: center;"><u>GENDER DISTRIBUTION</u></p> <p>MALE            2,706 (64.40%)</p> <p>FEMALE        1,496 (35.60%)</p>
<p style="text-align: center;"><u>DROPPED MEMBERS</u></p> <p>DECEASED            23</p> <p>CLUB CANCELLED     0</p> <p>OTHER                 276</p> <hr/> <p>TOTAL                 299</p>	<p><a href="#">CLICK HERE FOR CUMULATIVE MEMBERSHIP DATA</a></p>	<p>TOTAL FAMILY UNIT MEMBERS            2,805</p> <p>FAMILY MEMBERS PAYING HALF DUES            1,758</p>